

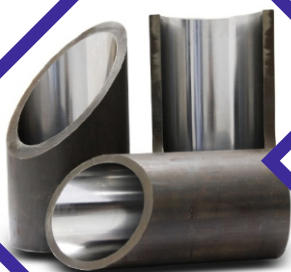


"PRECISE QUALITY EVER..."

ARISH
METAL TUBES

AN ISO 9001:2003 CERTIFIED COMPANY

TUBES & SHAFTS



- ▲ HONE TUBE
- ▲ READY TO HONE TUBE
- ▲ CUSTOMISED CYLINDER TUBES
- ▲ HARD CHROME PLATED SHAFTS
- ▲ INDUCTION CHROME PLATED SHAFTS



ABOUT US

IMPORTER AND STOCKISTS OF SEAMLESS HYDRULIC HONE TUBE, READY TO HONE TUBES, HARD CHROME SHAFTS, INDUCTION CHROME SHAFTS AS WELL MADE TO ORDER DRAWING SPECIFIC CYLINDER TUBES.

Arish Metal Tubes backed with enriching experience of more than 25 years. we have positioned ourselves as the leading Importer - suppliers and stockists of cold drawn Seamless Steel Tubes, Hydraulic Tubes, (RTH) Prehoned Tubes, Hardchrome Rods. We provide these products in diverse specifications to attain the complete satisfaction of the clients. Today, with significant industry experience the firm has evolved horizontally & vertically to become manufacturer & distributor.

VISION

- The Enduring Power of Metal Tube to make the World a Better Place.
- To be Leader in Customer's Satisfaction, Empowerment & to Serve with Integrity.

MISSION

- To be an Industrial Leading Provider of High Quality Specialty Products, One Stop Solution For Our Valued Customers For Quality & Precision Products.
- To Serve all customers with Competitive Price, Consistent Quality with Robust Packaging.

HONE TUBES & READY TO HONE

Material can be arrange in both imperials and metric sizes confirming to DIN 2391 or EN 10305-1 with specified tolerance requirement. Our In House honing facility provides custom size & length and prompt delivery.

SPECIFICATIONS

- Steel Grade : E355 (EN 10305-1)
E355 (EN 10305-2)
ST52-3 (DIN 2391)
ST52-3 (DIN 2392)
- Conditions : +SR / BK+S
- Size ID : 40mm to 450mm
- Thickness : 4mm to 25mm
- Tolerance : H8, H9, H10
- Length : 3m to 11m
- Straightness : 1mm : 1000mm
- Eccentricity : $\leq 10\%$ (EN 10305-1)
- Surf. Finish : $Ra \leq 0.20$ m SRB
 $Ra \leq 0.40$ m Hone

Custom Grade, Size Available On Request



CUSTOMIZED HONE TUBES

We have well established manufacturing set ups for Non Standard size/ grade Hydraulic Tubes as per customer Design and Applications...

We also can give Hydraulic tube Assembly with Boring, machining, Welding.. like suiting to your needs.



HARD CHROME PLATED & INDUCTION PLATED SHAFT

Hard Chrome Plated Shafts (Hard Chrome Plated Bars) are designed to meet your specific needs for piston rod material in Hydraulic & Pneumatic Cylinders and other applications.



SPECIFICATIONS

- Material : EN-8D/CK-45
- Hard Chrome Plating Thickness : 25 to 30micron
- Surface Roughness : better than RA-0.2
- Surface Hardness : 850 to 1100 HV
- Straightness : 0.1 per meter max
- OD Tolerance : f7/f8/g6
- Hardness Case Depth : 1.5 mm to 2.5 mm
- Hardness : 58 ± 2 HRC

OUR MACHINE SHOP

Our other Sister Company which Established in 2003 as **Ambica Honing & Hydraulics..** are Well organised set up for Cylinder tube Honing Job work with QUALITY is the main essence of our company in Market.. We have fully automatic honing both Horizontal & Vertical to meet precise & Consistent quality products from Decade..



OUR HONING & BORING CAPACITY

MINIMUM ID 18 MM.TO MAXIMUM ID 800 MM. LENGTH 2000 MM
MINIMUM ID 70 MM.TO MAXIMUM ID 450 MM. LENGTH 15000 MM

COMPLETE COMPOSITE SOLUTION

Arish Metal Tubes

📍 Plot No. 515/3,
Opp New Telephone Exchange, Phase IV,
Vatva GIDC, Ahmedabad - 382445.

☎️ +91 8511671604
+91 9724337691

✉️ arishmetal@gmail.com
sales@arishmetaltubes.com

🌐 www.arishmetaltubes.com



"Seamless" WITH US :

